

This is a cached copy of the web page at <http://www.geocities.com/gregua/windas/install.html> as retrieved on 2008/06/23@18:08
We are neither affiliated with the authors of this page nor responsible for its content.
If you object to this cache, contact webmaster at this domain.

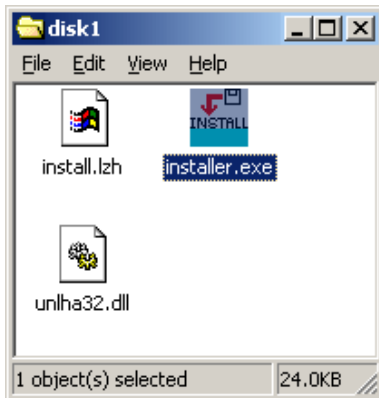
(note: All the files in the ablserv.com/files/windas folder have been [cached as of 20080614](#))

Note: A pre-installed version of these files is available at <http://www.bloggybloggy.com/randomdownloads/windas.zip>

Installing Windas and Required Libraries

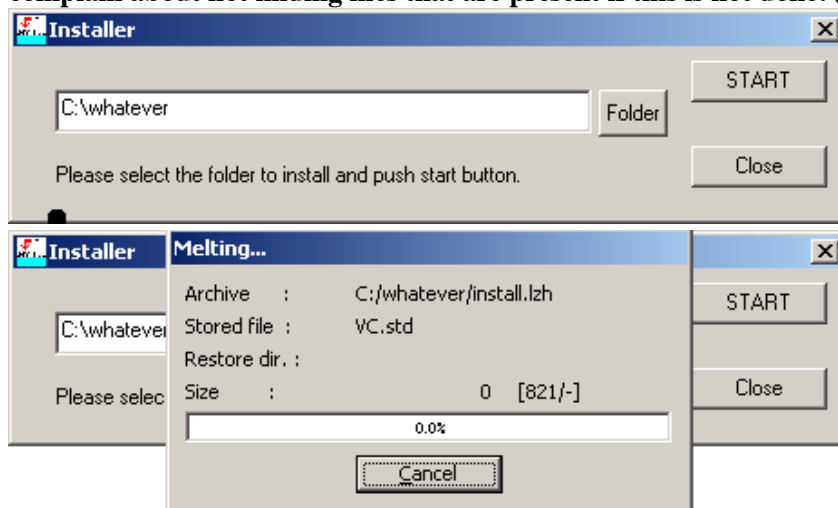
[Return to Index](#)

1. Download *windas.exe* from <http://www.ablserv.com/files/windas/WDAS/>
The file you see at /files/windas/windas.exe is incomplete and won't work.
You may also want to download windas_usr.exe for the manual in .doc format.
2. Run windas.exe to extract 3 files, installer.exe, unlha32.dll and install.lzh.

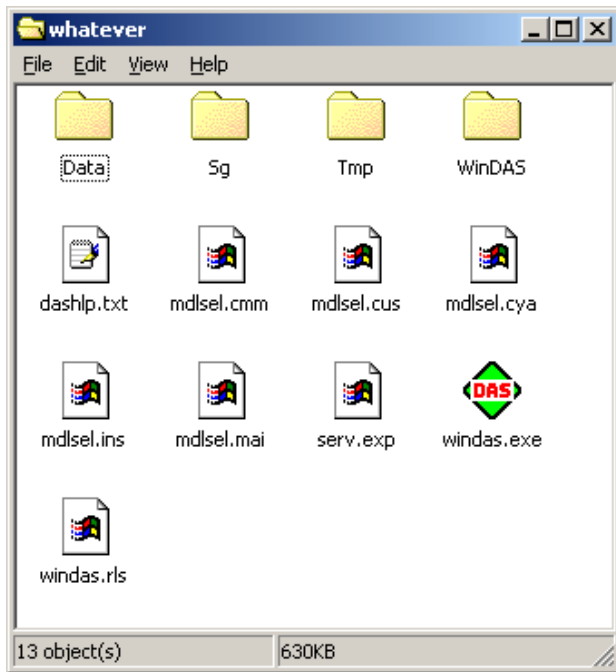


You can now run the installer.exe to extract windas to any folder.

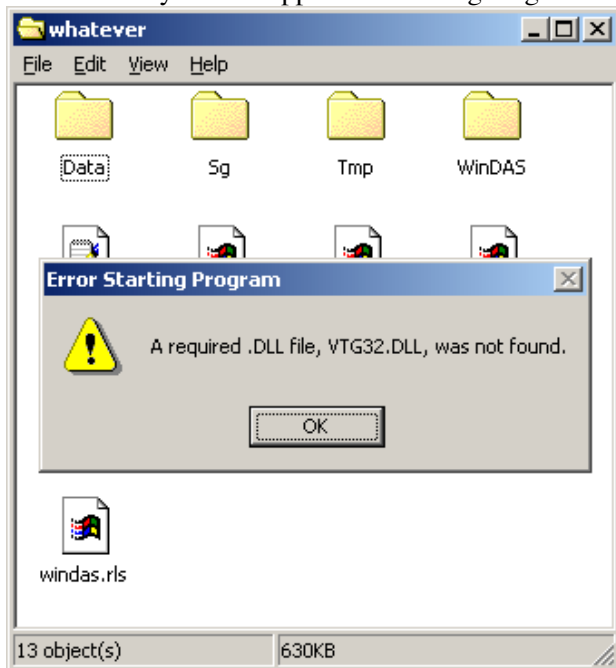
Problem: Using the 'Folder' button does not work! You must type in the folder name manually. The installer will complain about not finding files that are present if this is not done. (Thanks to Dorian for this fix)



You should now have the contents extracted at that location.













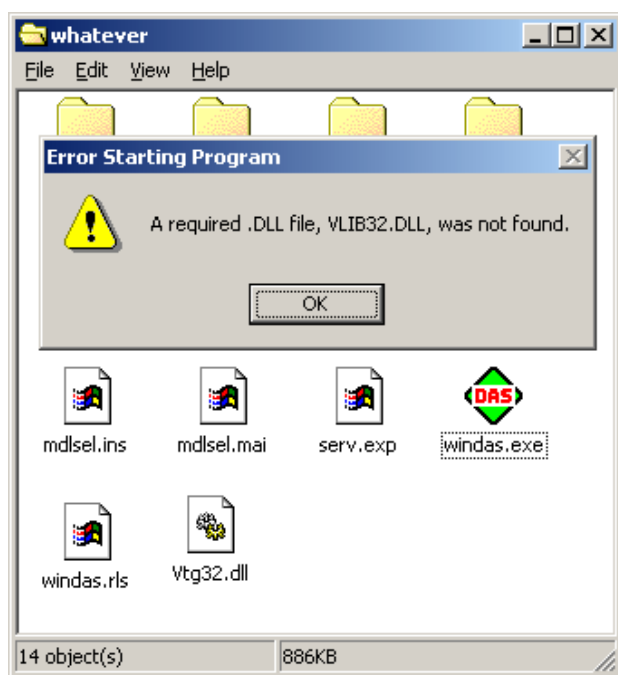
3. Windas now requires external libraries which are used to control several different signal generators. .dll (dynamicly linked library) files are linked to the process memory image at runtime. The program will refuse to run without them despite us not needing any of the functions they contain (I assume you don't have any of the supported video signal generators).



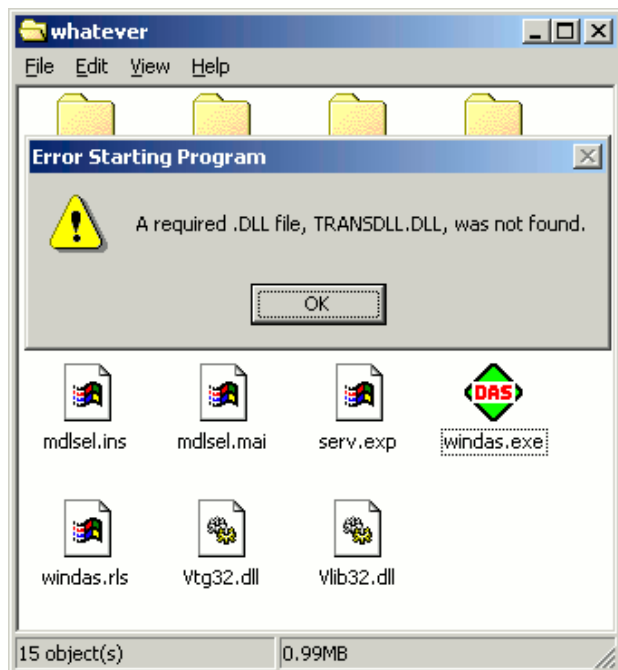
These dll files can be obtained from <http://www.ablerv.com/files/windas/> under the directory for the respective signal generator.

Index of /files/windas/Team/disk3

<u>Name</u>	<u>Last modified</u>	<u>Size</u>	<u>Description</u>
 Parent Directory	26-Apr-2005 18:27	-	
 CW3220.DLL	26-Apr-2005 18:27	224k	
 DLL32SAM/	26-Apr-2005 18:27	-	
 VLIB32.DLL	26-Apr-2005 18:27	128k	
 VTG.INF	26-Apr-2005 18:27	2k	
 VTG.VXD	26-Apr-2005 18:27	20k	
 VTG32.DLL	26-Apr-2005 18:27	256k	
 VTGQ.VXD	26-Apr-2005 18:27	21k	
 VTGT.SYS	26-Apr-2005 18:27	23k	
 VTGT.VXD	26-Apr-2005 18:27	26k	







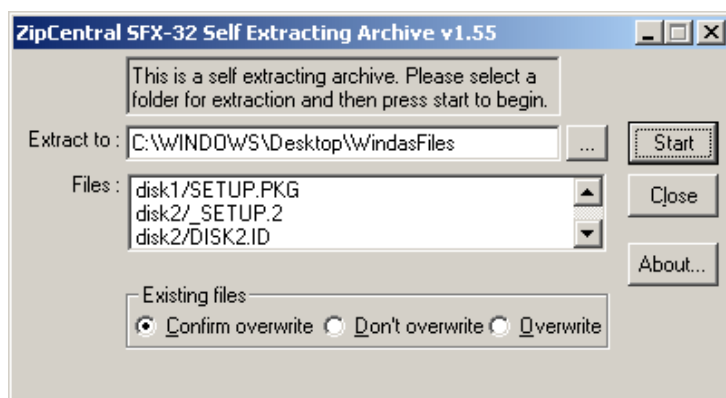
The .dll file TRANSDLL.dll is only available from the Astro SG installer.



Download /files/windas/Astro/astro.exe , which will extract the Astro SG installer.
















Index of /files/windas/Astro

Name	Last modified	Size	Description
 Parent Directory	26-Apr-2005 18:27	-	
 astro.exe	26-Apr-2005 18:27	1.5M	
 disk1/	26-Apr-2005 18:27	-	
 disk2/	26-Apr-2005 18:27	-	

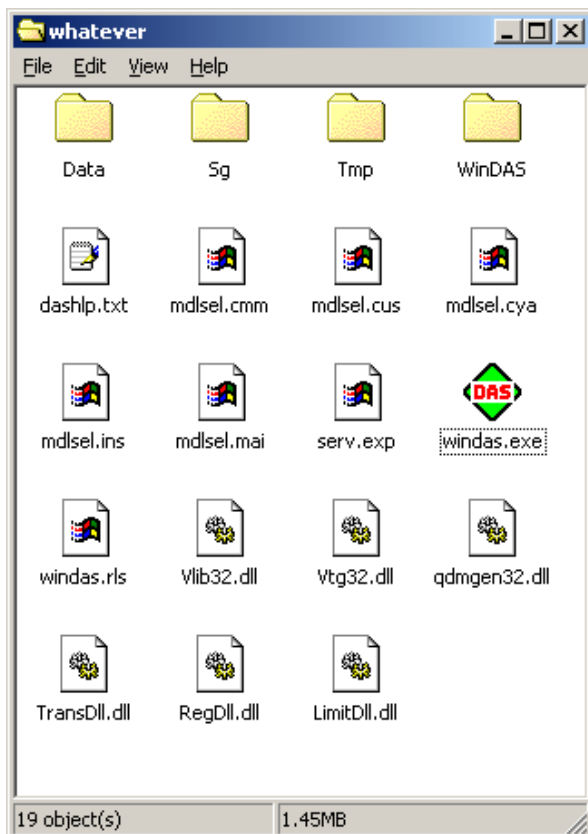


Run the extracted set up program and be sure to refer to disk2.
 TransDll.dll RegDll.dll and LimitDll.dll will be installed in C:\windows\system\ directory. Find and copy them to your windas directory so you can uninstall Astro SG.
 You will be asked about a qdmgen32.dll which can be obtained as shown.

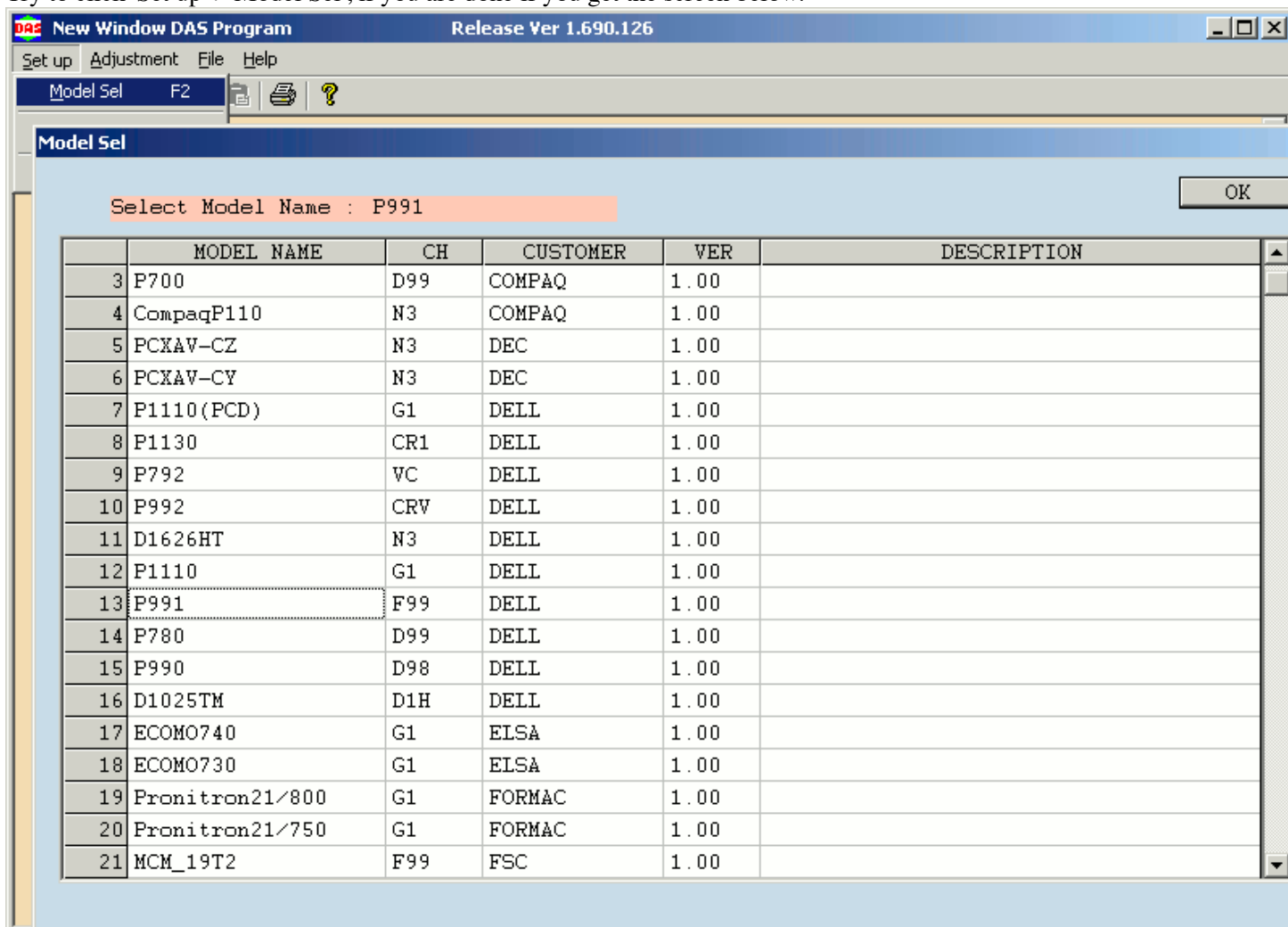
Index of /files/windas/Quantum/QD

Name	Last modified	Size	Description
 Parent Directory	26-Apr-2005 18:27	-	
 CHANGING_DLL_VERSIONS.TXT	26-Apr-2005 18:27	4k	
 QDLOGO.AVI	26-Apr-2005 18:27	29k	
 QD_PCI.inf	26-Apr-2005 18:27	1k	
 QD_USB.inf	26-Apr-2005 18:27	2k	
 Setup.bmp	26-Apr-2005 18:27	65k	
 Setup.exe	26-Apr-2005 18:27	35k	
 Setup.ini	26-Apr-2005 18:27	1k	
 VERSION 3 HELP.HLP	26-Apr-2005 18:27	691k	
 Version 3 Help.CNT	26-Apr-2005 18:27	7k	
 data1.cab	26-Apr-2005 18:27	708k	
 data1.hdr	26-Apr-2005 18:27	18k	
 data2.cab	26-Apr-2005 18:27	1k	
 ikernel.ex	26-Apr-2005 18:27	250k	
 inf instructions.txt	26-Apr-2005 18:27	1k	
 layout.bin	26-Apr-2005 18:27	1k	
 qdmgen32.dll	26-Apr-2005 18:27	140k	
 qdmgen32 old.dll	26-Apr-2005 18:27	140k	

You should now have all .dlls shown below and windas should run.







Try to click 'Set up'-'>'Model Sel', if you are done if you get the screen below.

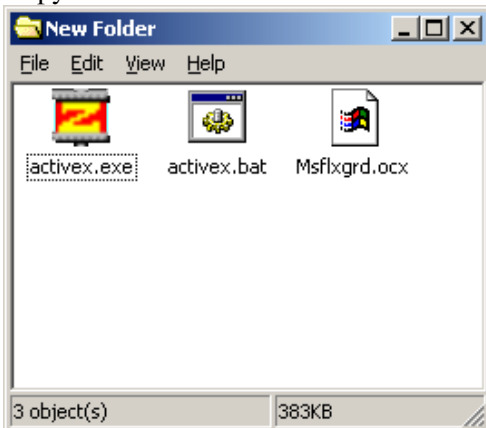


If not, download activex.exe as shown below

Index of /files/windas/ActiveX

Name	Last modified	Size	Description
 Parent Directory	26-Apr-2005 18:27	-	
 MSFLXGRD.OCX	26-Apr-2005 18:27	238k	
 activex.bat	26-Apr-2005 18:27	1k	
 activex.exe	26-Apr-2005 18:27	145k	

Copy activex.exe into a blank folder and extract contents.



Right click activex.bat ->edit, make the change indicated below.

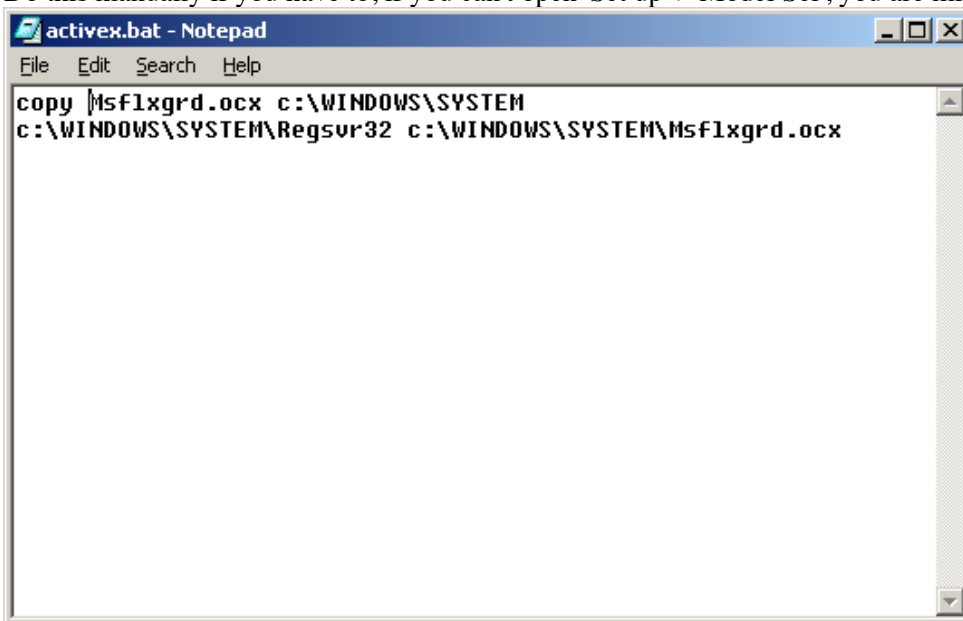
Problem! This is not generic Enough for Windows XP!

Instead make the file read:

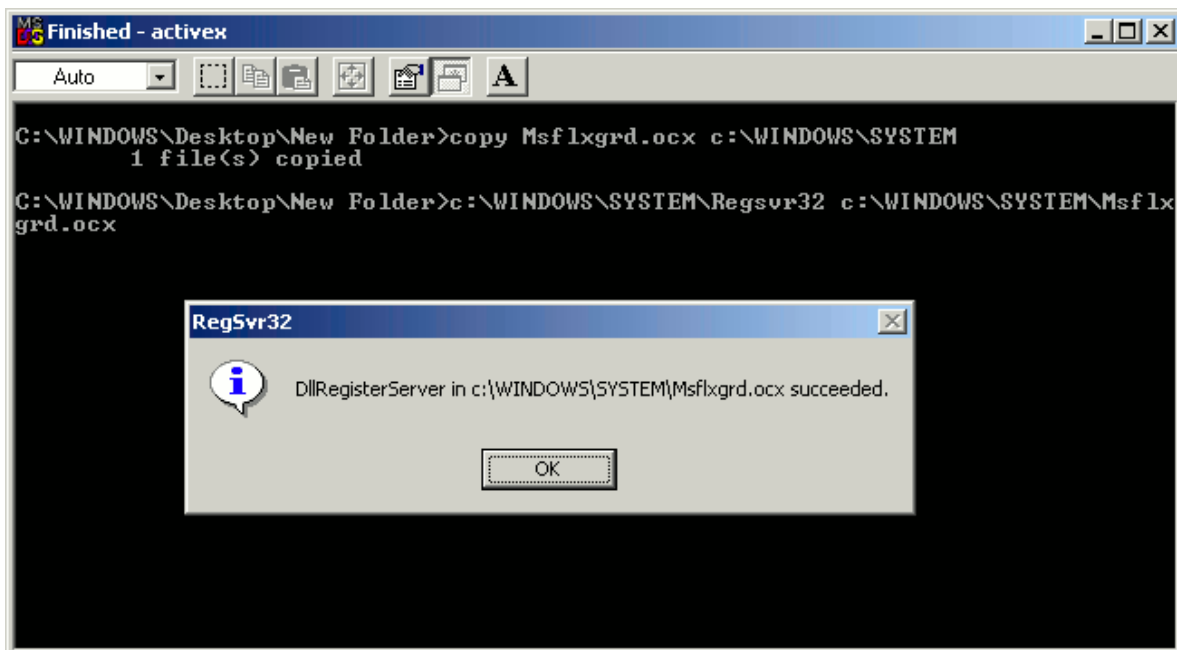
```
copy msflxgrd.ocx %systemroot%\system32
```

```
regsvr32 %systemroot%\system32\msflxgrd.ocx
```

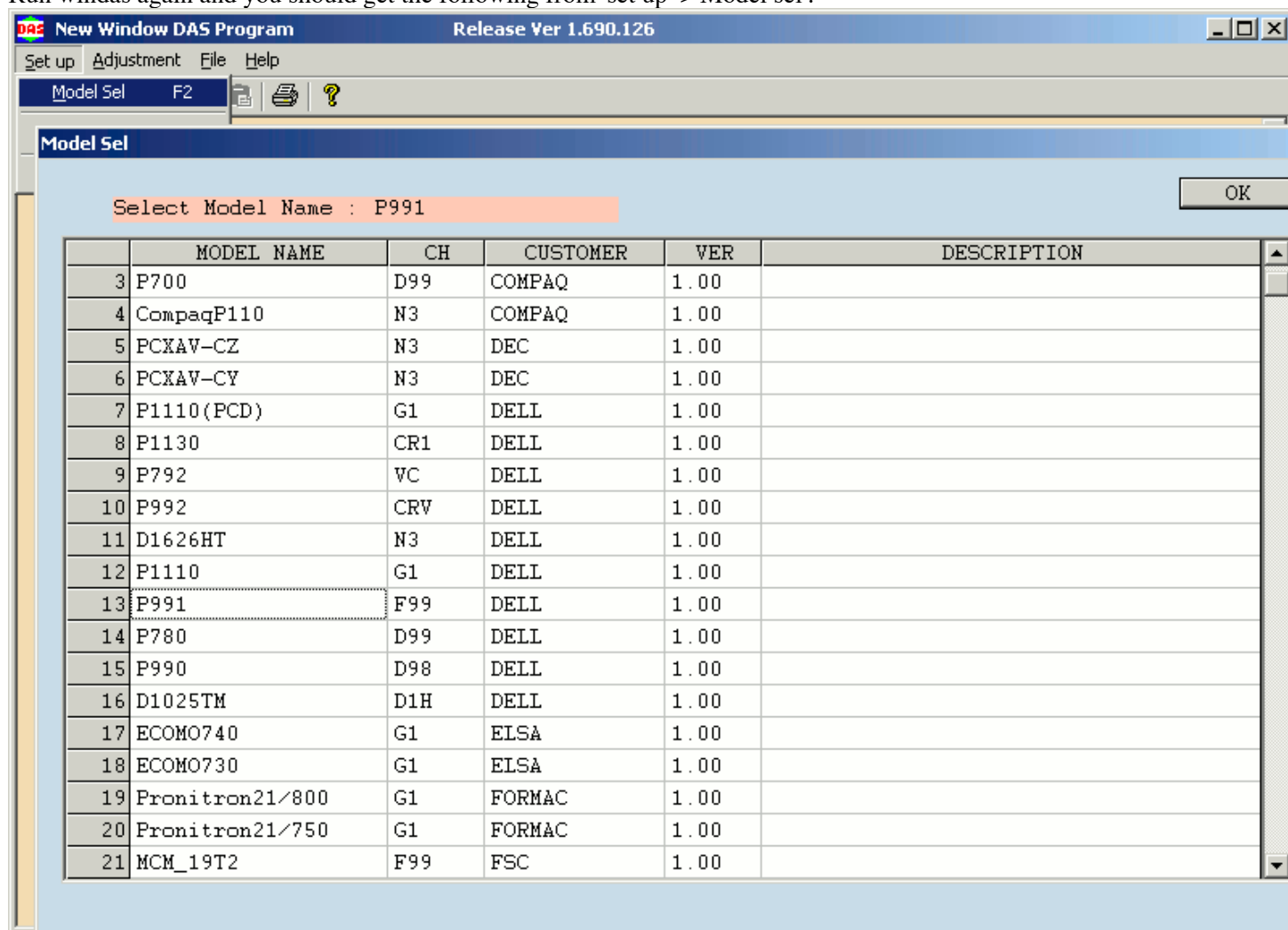
Do this manually if you have to, if you can't open 'Set up' -> 'Model Sel', you are missing this step!



Now double-click activex.bat, you should see the following.



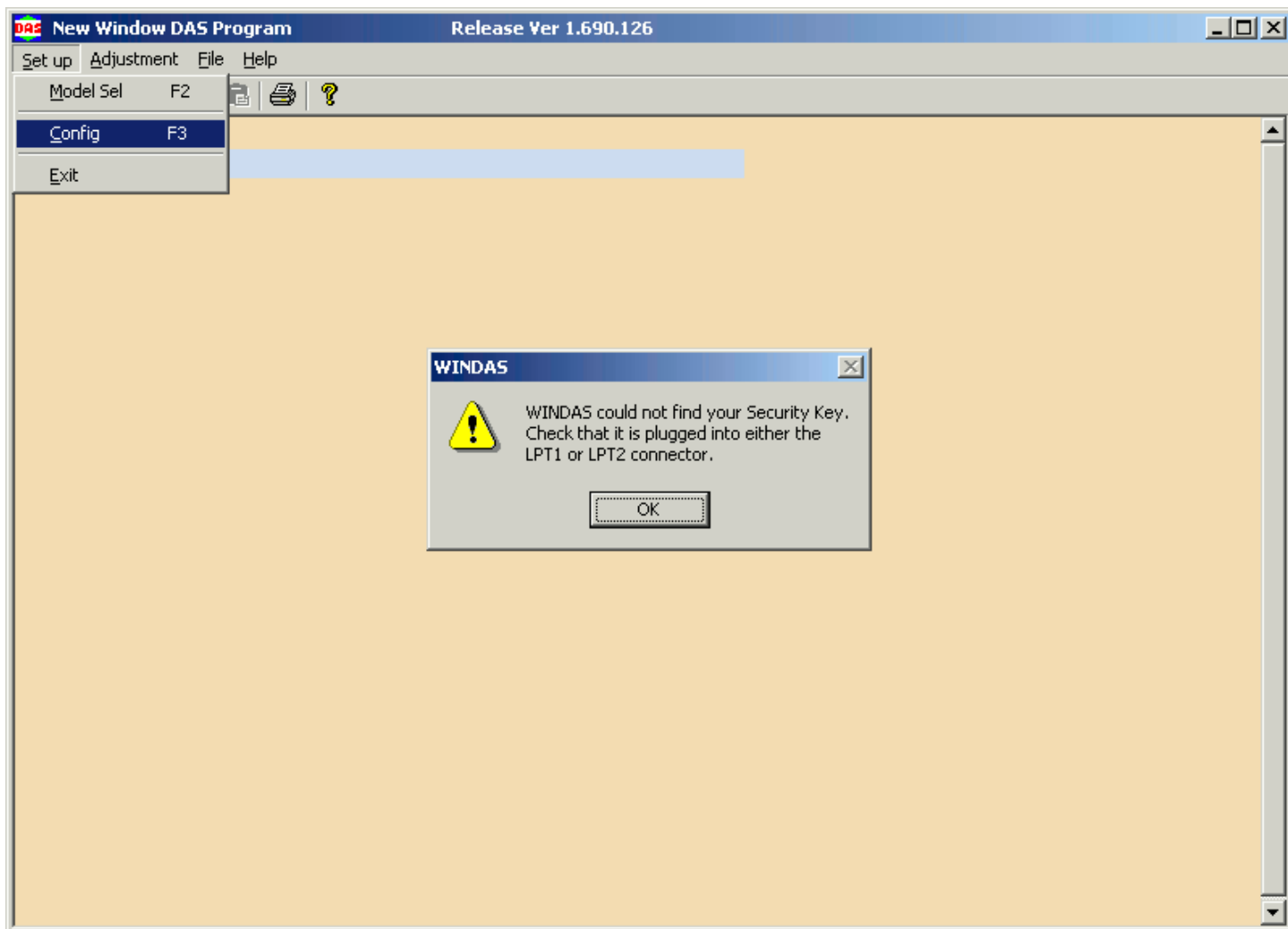
Run windas again and you should get the following from 'set up'-'Model sel'.



Now windas has all libraries it needs to function properly, if you are still missing something you should decide if it is an MS library, or a signal generator library. Search for signal generator libraries on ablserv.com/files/windas/, search for MS libraries on google.

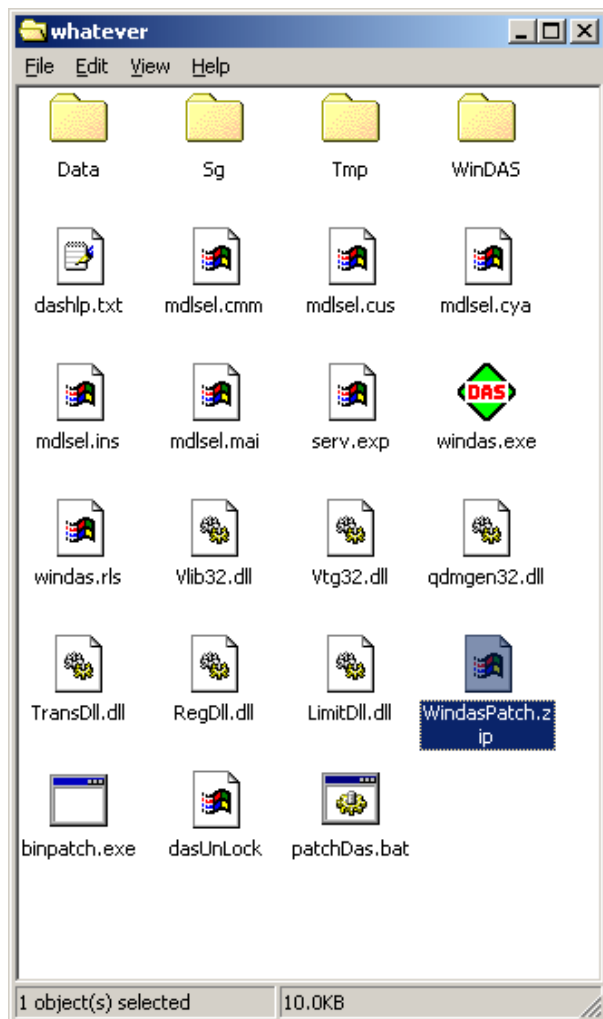
Post on [ShortMedia thread](#) for help

4. Windas will not be very usefull without the hardware device

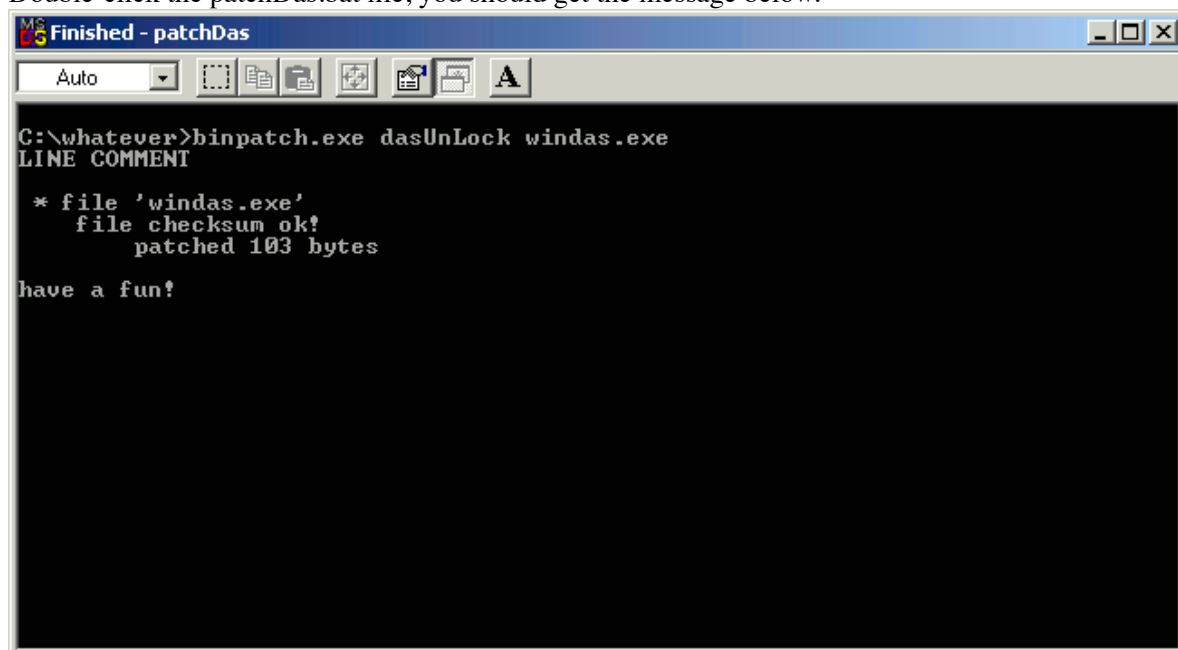


Just about everything you try will advise you to "Check configuration."

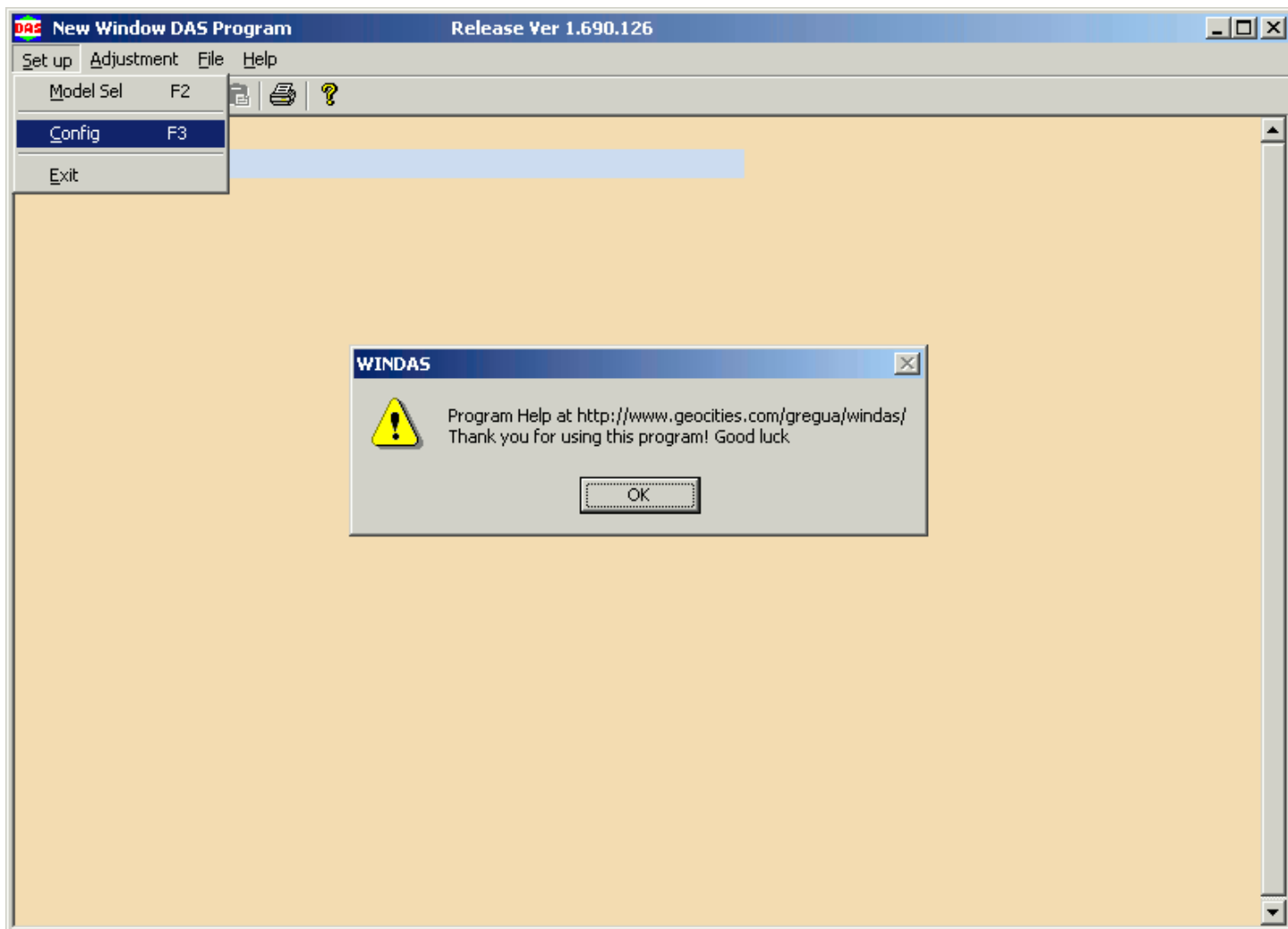
Download my [WindasPatch.zip](#) and extract to where you installed windas.



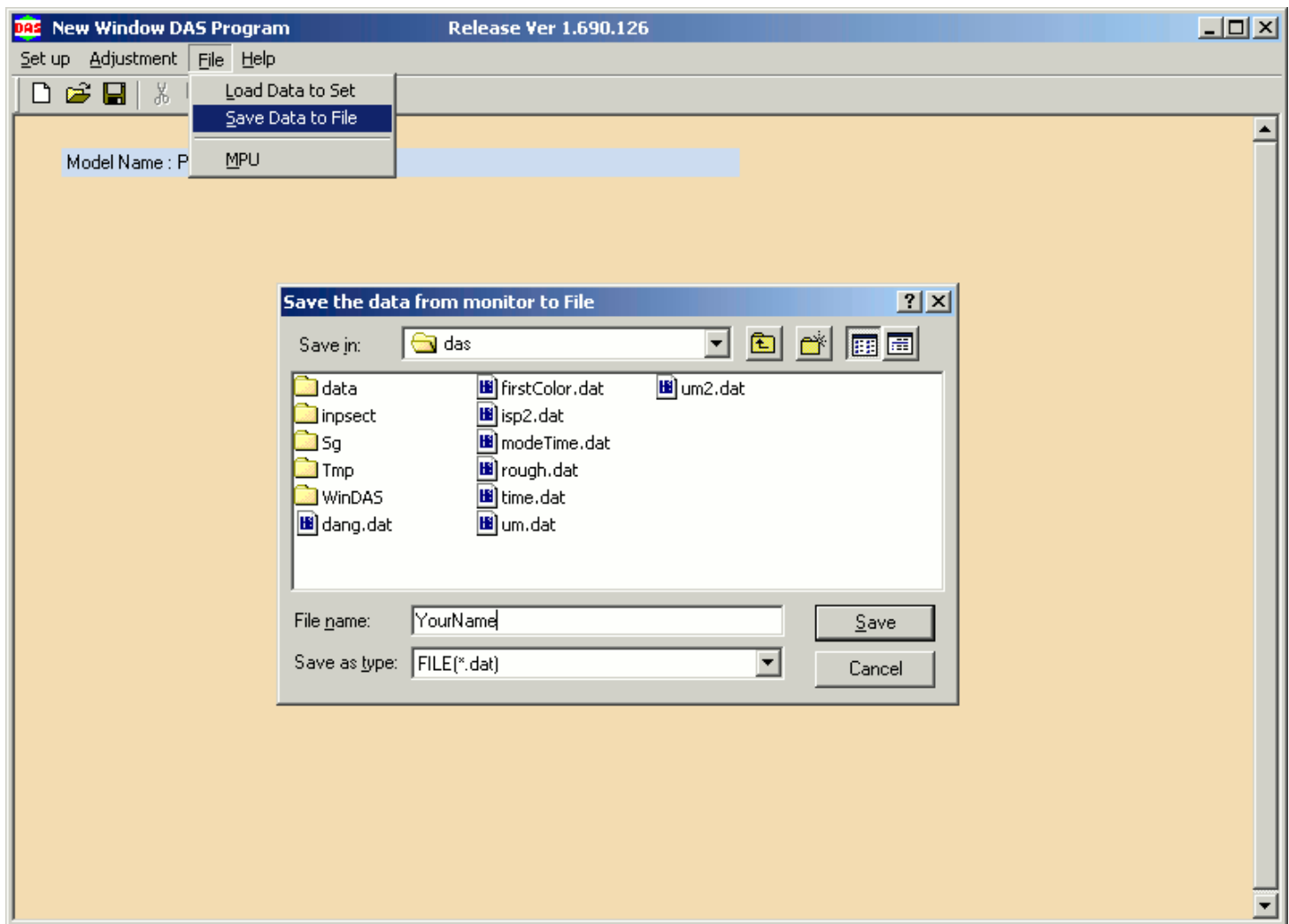
Double-click the patchDas.bat file, you should get the message below.



Now run 'Set up'->Config and you should see the following.



Congratulations! You have successfully installed and patched Windas! With your Ecs cable windas will be fully functional! Make sure to back up your current monitor config before doing anything else.



[Return to Index](#)